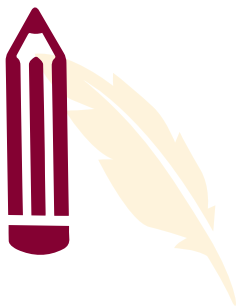




MOVING UP TO YEAR 7



PRINCIPAL:
MRS. H. THORNTON



01302 651 035



www.donvalleyacademy.org.uk



info@donvalleyacademy.org.uk



Jossey Lane, Scawthorpe, Doncaster, DN5 9DD

MESSAGE FROM THE PRINCIPAL

Don Valley Academy is an 11–16 school which is proud to be part of Delta Academy's Trust.

Since becoming a Delta School, our results have improved significantly, student numbers have grown rapidly and this year will see another year of increased popularity.

We have brilliant teachers, a fantastic building and vast resources that ensure your child receives the very best standard of education.

On behalf of all the staff, students and parents/carers, I would like to welcome you to our 'Moving Up' Booklet.

A big decision

I know that choosing the right secondary school for your child can be one of the most difficult decisions you make. We hope that this booklet and our transition package will give you a flavour of what we offer and that you will be eager for your child to join our academy.

We believe

At Don Valley we believe that every child has a right to an outstanding education. We are determined to make this a reality. Here at Don Valley, the entire school community is committed to providing a wonderful educational experience which enables all students to achieve their potential.

Our offer

We deliver exciting and engaging lessons within a safe and supportive environment. We offer high-quality care, guidance and support and a flexible curriculum along with an extensive range of activities beyond the classroom.

I look forward to sharing more of the academy's successes and meeting you in September.

Yours sincerely,
Hannah Thornton
Principal



LEARNING MANAGER

Welcome to Don Valley Academy.

Each year group has their own **Learning Manager**.

You should look for your Learning Manager if you need any kind of support.

- **For example:**

If you need to speak to anyone about something important

If something is worrying you

If you are struggling with work or if you have a disability



OUR VALUES

Don Valley Academy prides itself on being:

- An Academy with high standards and expectations, where all students enjoy their learning and achieve to the best of their ability, giving them the skills to take them forward into the world of work.
- The forefront of developing lively and enquiring minds, enabling students to become confident and ambitious.
- A highly inclusive Academy by working in partnership with local agencies and supporting a personalised curriculum for all students.
- An Academy where courtesy, collaboration, enterprise and initiative are paramount.
- An innovative and energising environment for both students and staff.
- At the centre of our community in its service to others and promoting community cohesion.

**CHANGING LIVES
THROUGH BELIEF
AND COLLABORATION**

**KNOWING STUFF IS
BETTER THAN NOT
KNOWING STUFF**



TEACHING AND LEARNING

ASPIRE & CHALLENGE

Lessons have an expected outcome (Challenge) and a more complex, demanding outcome (Aspire). These are what you are going to learn in terms of knowledge or a skill and helps to assess your progress.

COLLABORATIVE LEARNING

Classes, where appropriate, sit in mixed ability groups of 4. Lessons are designed to let you to be actively involved in a variety of tasks that will challenge you. You are expected to work positively with other students to encourage learning.

QUESTIONING

You should not put your hand up to answer questions. Instead, the teacher will decide who answers questions by targeting a wide variety of students throughout the lesson at random. This is a fair system and ensures you are alert at all times.

HANDS UP

Whilst you do not raise your hand to answer questions, you will raise your hand when you are expected to be silent and focused on the teacher. When teachers require silence and focus from the whole class, you will raise your arm. You will copy until everyone has followed this.

PROUD

Pen - using an appropriate pen for writing
Ruler - underlining titles or using for drawings
Oops - looking for mistakes
Underline - underlining titles
Draw - using a pencil for drawing

SLANT

Sit up
Listen
Ask questions
Nod
Track the speaker

OUR EMPOWERING CURRICULUM

During your time at Don Valley Academy you will be exposed to six very important values. These will be weaved into all your subjects, our reward system, academy assemblies and tutor time.

The Power of Pleasure	The Power to Apply Logic	The Power of Transformation
You will find joy in learning and have regular opportunities to experience success.	You will gain the knowledge and confidence to investigate and solve problems.	You will develop empathy and understanding for alternative views and beliefs.
The Power to Make a Difference	The Power of Inclusion	The Power of Self Determination
You will understand local, national and global issues and have the skills to discuss them.	You will have access to all parts of the curriculum.	You will have the knowledge and confidence to make decisions that impact your own journey at Don Valley Academy.





ATTENDANCE

You should always aim to get 100% attendance every year.

- If you are absent from the Academy your parents/carers must contact the Attendance Department as soon as possible to let us know the reason why.
- If we have not received contact from your parents/carers by 9:30, the Academy will contact your parents/carers by telephone or text to ask where you are. If we cannot make contact, we may make a home visit.
- If you are late to the Academy, you must sign in at Student Reception. You will be given a late mark and receive a detention which must be completed the following day.



STUDENT PLANNERS

PASSPORT TO LEARNING

On your first day you will be given a student planner which you must keep with you at all times during the academic year. Your planner is your **'PASSPORT'** and you must carry your planner with you **EVERY DAY**.

- Your planner contains useful information as well as a diary which you can use to keep track of your homework, enrichments, Above and Beyonds, detentions and pledges.
- It contains details of when school holidays and bank holidays are and term times.



HOME LEARNING

You are expected to complete one hour of home learning each weekday, in three 20-minute parts:

SPARX MATHS

You will be set weekly homework which is instantly marked and this is then fed back to your Maths teacher. You will be encouraged to reattempt all homeworks until you have achieved 100% and then work on any other tasks you feel you need.

READING

Reading is the key to unlocking success in all subjects. We believe that yourself and staff should regularly read for your own pleasure. You will receive a termly Reading Route book based around themes such as Crime and Mystery, Thrillers and Humour for you to read as part of your home learning.

KNOWLEDGE ORGANISER

These Knowledge Organisers will provide you with all of the key information you will need to make great progress in your subjects.

Knowledge Organisers are expected to be studied every weeknight, with notes made in the exercise book.

Knowledge Organisers are also used in lessons, where you will be quizzed on the information they contain as well as being able to use them as support material when you need a reminder. They really are essential to your academic progress.

We display outstanding student work on 'Home Learning Heroes' walls. You are issued with Above and Beyond stickers for outstanding work completed and celebrate this through #ProudThursday.

TUTOR GROUPS

- You will be placed into a tutor group with students from your year group
- During tutor time you will cover a wide range of topics and take part in a number of exciting activities
- Every week during tutor time you will take part in Votes for Schools. This is a session where you will discuss an important topic with members of your tutor group

You will also participate in 'This is Culture' activities where you will have the opportunity to explore music, art, literature of different countries and societies.





CELEBRATIONS

This is an acknowledgement of someone going ‘above and beyond’ the expectation of their learning environment.

- Stickers are issued to reward your effort in lessons. You can collect these from all departments.

PROUD THURSDAY

You will be rewarded for your achievements in many different ways.

- Invitation to Brunch with the Principal
Free Breakfasts, Above & Beyonds
Raffles, Prize Draws, Positive Postcards
RAK - Random Acts of Kindness
Celebration Assemblies

...and many other celebration events throughout the year.

**Be
proud
of
your
achievements**

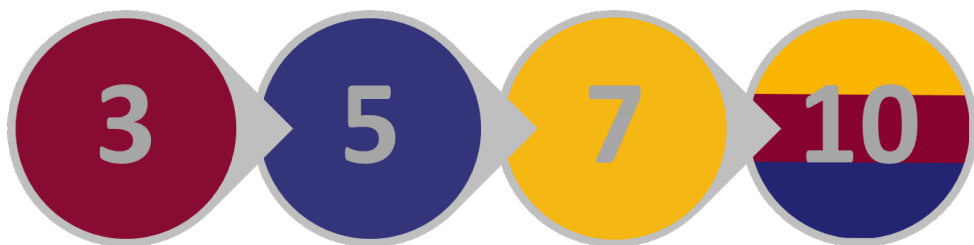


PLEDGES

Pledges are all about developing you as a person and allowing you to gain rounded experiences in and out of the Academy.

These include: regular attendance at an Enrichment activity, representing the Academy in sports, cultural or academic events, taking part in productions and presentations, being an active member of Student Voice and participating in fundraising events.

Every time you achieve a Pledge, this is signed and dated in your pledge record, in your planner.



3 Pledges are a great start to life in #TeamDVA	5 pledges are your passport to year 9 graduation	7 pledges are your passport to Year 11 Prom	10 pledges are your passport to a future career
--	--	--	--



JUNIOR LEADERSHIP TEAM

The Junior Leadership Team act as representatives and gives students 'a voice'.

All student leaders at the Academy act as representatives for their peers. The Team has Prefects in Year 10 & 11, led by a Lead Prefect. A Prefect is a student who is punctual, enthusiastic, reliable and kind. The ethos of the Prefect Team is to 'create solutions'.

The Prefect Team is supported by the Student Council. Each Tutor Group in the Academy has two representatives who attend regular meetings with the Prefect Team. Student Councillors meet with Year 10 & 11 Prefects to share the thoughts and opinions of their peers.

We aim to not only provide student leaders with opportunities to collaborate with both staff and peers to improve our school community, but also develop the skills necessary to lead successful lives beyond Don Valley Academy.

Student Leadership Structure

Year 10 & Year 11 Prefects

Year 11 Prefects are appointed following a rigorous application process. Prefects are the link between students and the academy's leadership team.

Student Council

Prefects' Councillors are elected by their peers and represents their form groups. They work in year group teams which are managed by year 11 Prefects.

Lead Prefects



Year 10 & Year 11 Prefect Team



Year 7
Student
Councillors

Year 8
Student
Councillors

Year 9
Student
Councillors

ENRICHMENT ACTIVITIES

Don Valley's enrichment focus is to provide opportunities for you to develop lifelong interests whilst acquiring important skills.

You will improve your self-esteem and develop higher aspirations.

Enrichment takes place in clubs that will encourage you to take part in special interests such as music, sport and artistic performance. A variety of different clubs are available for you to sign up to each half term including:

Football, Rugby, Netball, Badminton

Science

Spanish

Homework Club

Drama and Music

Creative Writing

Board Games

PRIDE Club

Gaming Club





COMPULSORY ACADEMY UNIFORM

- **Delta Logo Blazer**
Delta clip-on Tie
Plain White shirt/blouse with collar
(Top button must be fastened and tucked in, long or short sleeved)
Tailored, plain black trousers or tailored, plain black knee length skirt. (Skirts to be worn with plain black tights, minimum 40 denier) (Lyrca/tube style skirts are not permitted)
Plain black flat shoes, that can be polished
(No logos, no heels, no pumps/trainers/boots and no embellishments e.g. Bows)
Plain black socks or plain black tights (minimum 40 denier)
A school bag (Big enough to fit an A4-sized folder)

All year 7 students receive a complimentary uniform pack to start the year. This includes; blazer, skirt or trousers, shirts, tie & PE kit.

PE KIT

- **Delta Polo Shirt**
Delta PE shorts
Delta reversible outdoor games top
Plain black knee-length socks
Appropriate trainers / football boots

OPTIONAL UNIFORM

- **Academy Logo Jumper**
(Worn with Academy Blazer, not as a substitute)
Plain black belt (no large buckles)

Should you have any concerns or financial difficulties in purchasing Delta uniform, please contact us for support.

KEEPING UP APPEARANCES

- **Make-up** is not permitted
Jewellery of any kind is not permitted
A digital or analogue watch is permitted (No smart watches)
Varnished/gel/acrylic/false nails are not permitted
Hair:
Only natural colours permitted.
Short cuts below a grade two are not permitted.
Shaved patterns are not permitted
Mobile phones, MP3s, iPods and video game devices are not permitted in the Academy.

GET YOURSELF EQUIPPED

The equipment you will need:

- Don Valley planner
Knowledge Organiser
A bag large enough to fit an A4 folder
Blue or black pens
Red pen
Pencils
Ruler
Reading book
Calculator (Mainly in Year 9 and over)

Other optional equipment may include:

- Pencil sharpener, eraser, coloured pens, highlighters...





TIMES OF THE DAY*

- School starts at 8:25 and ends at 14:30.

Your first lessons begins at **8:25**,
so you should be in the Academy by **8:20** at the latest.

TIME	PERIOD
8:25–9:25	Period 1
9:25–10:25	Period 2
10:25–10:40	First Break
10:45–11:00	Second Break
11:00–12:00	Period 3
12:00–12:30	Period 4a
12:30–13:00	Lunch
13:00–13:30	Period 4b
13:30–14:30	Period 5
14:30–15:30	Enrichment

2023/24 ACADEMIC YEAR

September 2023 (20 Days)

M	T	W	T	F	S	S
				1	2	3
4	5	6	7	8	9	10
11	12	13	14	15	16	17
18	19	20	21	22	23	24
25	26	27	28	29	30	

October 2023 (17 Days)

M	T	W	T	F	S	S
						1
2	3	4	5	6	7	8
9	10	11	12	13	14	15
16	17	18	19	20	21	22
23	24	25	26	27	28	29
30	31					

November 2023 (22 Days)

M	T	W	T	F	S	S
			1	2	3	4
5	6	7	8	9	10	11
12	13	14	15	16	17	18
19	20	21	22	23	24	25
26	27	28	29	30		

December 2023 (16 Days)

M	T	W	T	F	S	S
				1	2	3
4	5	6	7	8	9	10
11	12	13	14	15	16	17
18	19	20	21	22	23	24
25	26	27	28	29	30	31

January 2024 (18 Days)

M	T	W	T	F	S	S
1	2	3	4	5	6	7
8	9	10	11	12	13	14
15	16	17	18	19	20	21
22	23	24	25	26	27	28
29	30	31				

February 2024 (16 Days)

M	T	W	T	F	S	S
			1	2	3	4
5	6	7	8	9	10	11
12	13	14	15	16	17	18
19	20	21	22	23	24	25
26	27	28	29			

March 2024 (20 Days)

M	T	W	T	F	S	S
				1	2	3
4	5	6	7	8	9	10
11	12	13	14	15	16	17
18	19	20	21	22	23	24
25	26	27	28	29	30	31

April 2024 (12 Days)

M	T	W	T	F	S	S
1	2	3	4	5	6	7
8	9	10	11	12	13	14
15	16	17	18	19	20	21
22	23	24	25	26	27	28
29	30					

May 2024 (17 Days)

M	T	W	T	F	S	S
		1	2	3	4	5
6	7	8	9	10	11	12
13	14	15	16	17	18	19
20	21	22	23	24	25	26
27	28	29	30	31		

June 2024 (20 Days)

M	T	W	T	F	S	S
					1	2
3	4	5	6	7	8	9
10	11	12	13	14	15	16
17	18	19	20	21	22	23
24	25	26	27	28	29	30

July 2024 (17 Days)

M	T	W	T	F	S	S
1	2	3	4	5	6	7
8	9	10	11	12	13	14
15	16	17	18	19	20	21
22	23	24	25	26	27	28
29	30	31				

August 2024

M	T	W	T	F	S	S
			1	2	3	4
5	6	7	8	9	10	11
12	13	14	15	16	17	18
19	20	21	22	23	24	25
26	27	28	29	30	31	

 **School Holiday**
 **Disaggregated Training Day**
 **Bank Holiday**
 **Training Day**



TIMETABLE

- You will be given a copy of your timetable to put into your planner on your first day.
 - Days** are across the top of your timetable
 - Period/lesson** is down the side of the timetable

SAMPLE TIMETABLE

	Mon	Tue	Wed	Thu	Fri
1	English LST 221	History KAL 204	French RHA 207	Maths SFO 111	Geography SMU 210
2	Life SCA 225	Science HLU 114	Art SRN 008	English ABU 226	PE BSA
B1	Form Time MBO 203	Form Time MBO 203	Form Time MBO 203	Form Time MBO 203	Form Time MBO 203
B2					
3	PE BSA	Maths SFA 111	English LTU 219	French RHA 207	Maths SFO 111
4	English LTU 219	Geography SMO 210	Maths JTR 103	Science DCO 116	Life SCA 225
5	Science HLU 114	Music JBE 006	Drama RTU 013 Studio	IT LBR 213 IT	History KAL 204



EATING AND DRINKING

- All food and drink must be consumed in the dining hall.*
Water may be permitted in traditional teaching rooms.
(not in library, computer rooms or science labs)
Chewing gum and fizzy drinks are not permitted anywhere on the Academy grounds.
Students will have the opportunity to have a nutritious breakfast before beginning the school day.

*Students who enter the dining hall must be seated at all times.

<p>BREAK</p> <p>Breakfast Roll Bagel / Muffin Sausage Roll Cheese on Toast Belgian Waffle Belgian Waffle Syrup Pancakes x 2 Pancakes Syrup x 2</p>	<p>DESSERTS</p> <p>Fruit Pot Fresh Fruit Item Rice Cakes Proper Crisps Cold Pudding Iced Doughnut Yum Yum</p>	<p>cold</p> <p>Sandwich Any Sliced Bread (Triangle) Baguettes Cheese/Turkey/Egg Mayo Baguettes Tikka/Chicken Mayo/Tuna Mayo Cold Pasta Pot Wraps</p> <p>hot</p> <p>Pasta Sauce Pasta Cheese Pasta Sauce & Cheese</p>	<p>DRINKS</p> <p>Generation Juice</p>
---	--	--	--

<p>HOT MAIN</p> 	<p>SAUSAGE & MASH</p> <p>OVEN BAKED SAUSAGES WITH MASHED POTATOES AND SEASONAL VEGETABLES & GRAVY</p>
--	--

<p>HOT MAIN</p> 	<p>HOME MADE CHICKEN BURGER</p> <p>HOME MADE CHICKEN BURGER SERVED WITH WEDGES & SEASONAL VEGETABLES OR BEANS</p>
--	--

<p>HOT MAIN</p> 	<p>ROAST OF THE DAY</p> <p>BEEF, PORK, TURKEY OR CHICKEN WITH ROASTED POTATOES & STUFFING OR YORKSHIRE PUDDING AND SELECTION OF FRESH VEGETABLES</p>
---	---

<p>HOT MAIN</p> 	<p>FISH & CHIPS</p> <p>FISH OR BATTERED SAUSAGE SERVED WITH CHIPS & MUSHY PEAS OR CURRY SAUCE</p>
--	--

<p>HOT MAIN</p> 	<p>MINCE & ONION PIE</p> <p>HOMEMADE MINCE & ONION PIE WITH MASHED POTATOES AND SEASONAL VEGETABLES</p>
--	--



SAMPLE MENU*

Monday

All-Day Breakfast

Bacon, Sausage, Hash Brown,
Mushrooms, Grilled Tomato,
Baked Beans

Tuesday

Homemade Beef Lasagne

Garlic Bread
Salad & Coleslaw

Wednesday

Roast of the Day

Beef, Pork, Turkey or Chicken
served with
Roasted Potatoes, Vegetables,
Stuffing or Yorkshire Pudding
Gravy

Thursday

Homemade Chicken Nuggets
Seasoned Wedges
Served with Seasonal Vegetables

Friday

Fish & Chips

Crispy Battered Fish or Battered Sausage
Served with Chips, Mushy Peas or Beans

A selection of homemade desserts are available every day.

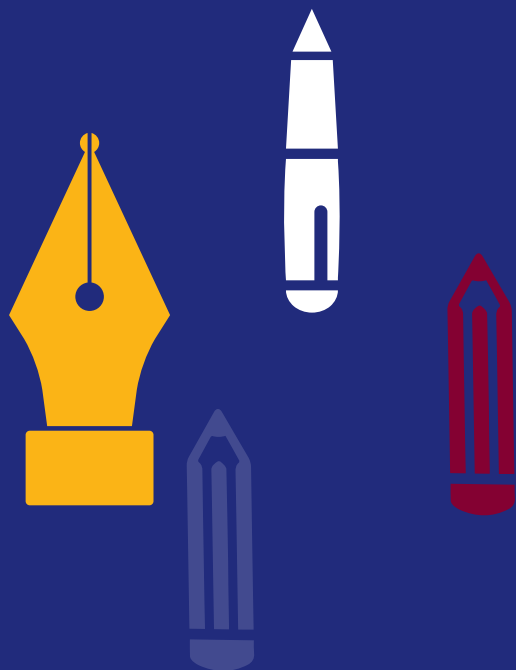
***One of many Menu examples.**

NOTES

This image shows a single sheet of white paper with horizontal blue ruling lines. The lines are evenly spaced and run across the width of the page. There are no margins, text, or other markings on the paper.

NOTES

This image shows a single sheet of white paper with horizontal blue ruling lines. The lines are evenly spaced and run across the width of the page. There are no margins, text, or other markings on the paper.



Don Valley Academy
Jossey Lane
Scawthorpe
Doncaster
DN5 9DD

Telephone: 01302 651 035
Website: www.donvalleyacademy.org.uk
Email: info@donvalleyacademy.org.uk
Twitter: @DeltaDonValley

